

MEASURING YOUR SPACE

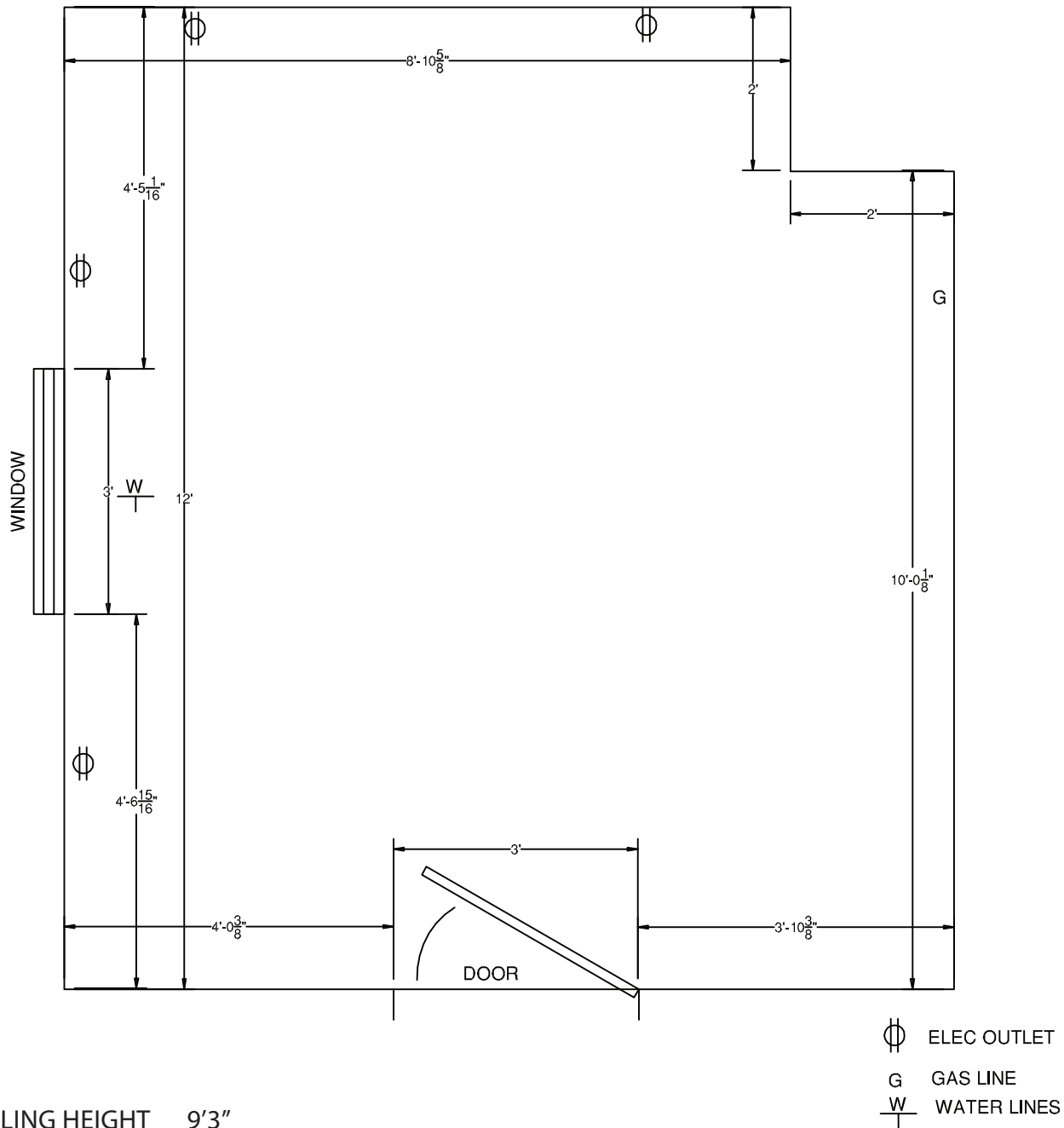
As we begin this process together it will be helpful if you are able to provide as many measurements of the room needing cabinets as possible.

If you are working with an architect, spatial designer, interior designer or contractor they may very well be helping with your cabinetry design and layout and have already taken these measurements. If not, we are pleased to help you to get started. It is quite easy.

All you need to begin is a steel tape measure, preferably one long enough to take your longest measurement in one run.

We are providing a sample floor plan for your review. The sample shows a standard kitchen with one door, one window, a water connection under the window, a gas connection, and four electrical outlets. We hope you'll use this sample plan as a reference for sketching out your own space on the graph paper provided. Try to mark the location of any electrical outlets or gas connections using the symbols shown. Measure and record the distance from your floor to ceiling. Also, remember to measure your doors and windows out to the furthest point of any casing or sill that surrounds the opening. Don't worry if your dimensions are not perfect. This exercise is merely meant to help you get started planning your dream kitchen. We can get exact measurements further along in the design process.

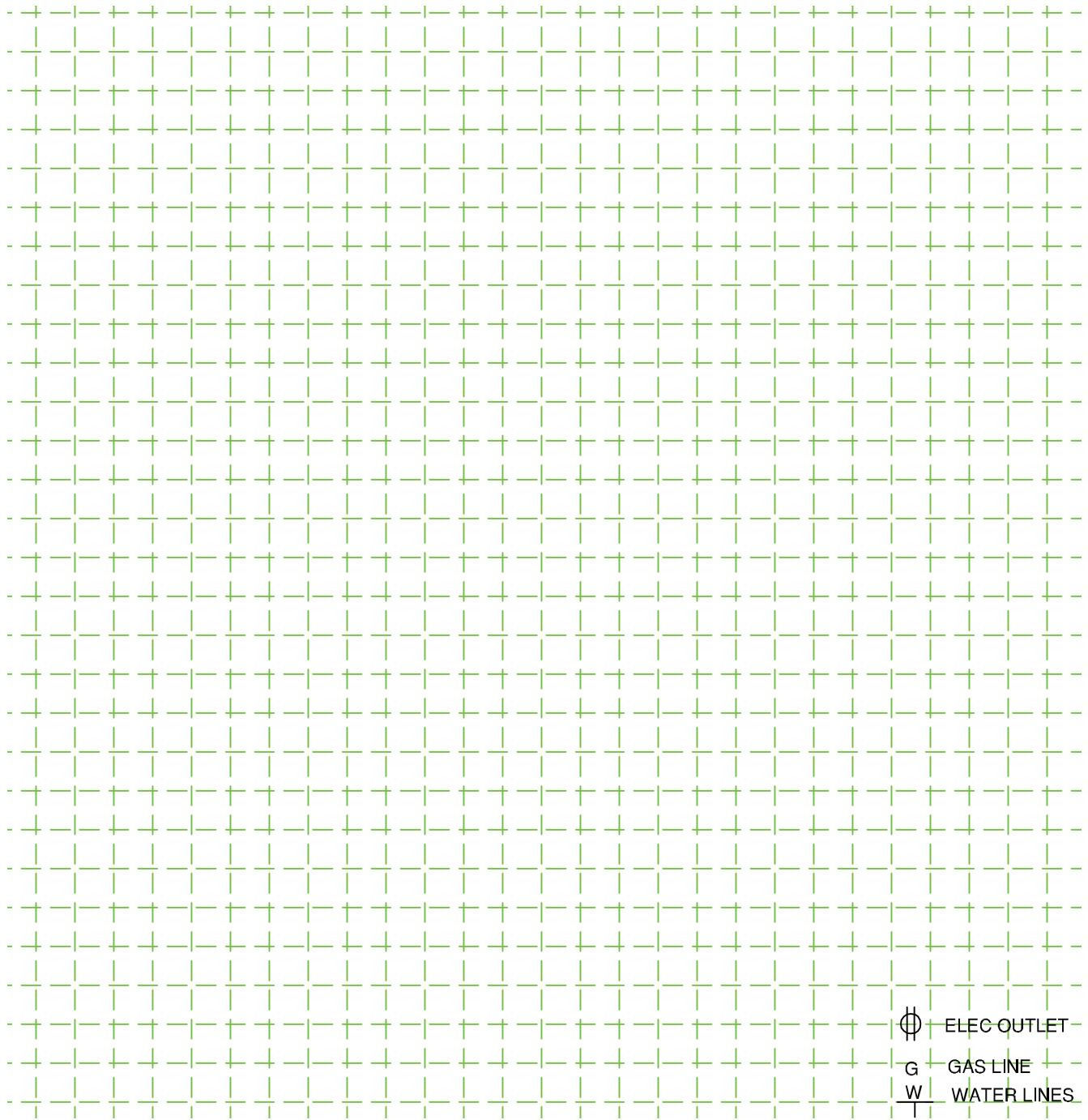
SAMPLE FLOOR PLAN






CEILING HEIGHT 9'3"

PROJECT NAME:		
LOCATION:		
CITY:	STATE:	ZIP CODE:
PHONE:	FAX:	
CELL PHONE:		
PLEASE SPECIFY THE BEST TIME TO CALL:		

SKETCH YOUR SPACE



 ELEC OUTLET
 GAS LINE
 WATER LINES

sample drawing is 6" grid spacing

CEILING HEIGHT _____

PROJECT NAME:		
LOCATION:		
CITY:	STATE:	ZIP CODE:
PHONE:	FAX:	
CELL PHONE:		
PLEASE SPECIFY THE BEST TIME TO CALL:		